



KAM KIU ALUMINIUM GROUP



자동차 부품



[www.kamkiu.com](http://www.kamkiu.com)

본사 HQ:

( )  
Kam Kiu Aluminium Products Group Ltd.

1817

Add: Rm17, 18/F, Concordia Plaza, 1 ScienceMuseum Road,  
Tsimshatsui East, Kowloon, Hong Kong

Tel: +852 2302 0808

Fax: +852 2302 0062

Email: [info@kamkiu.com](mailto:info@kamkiu.com)

생산 기지 **Production Facility:**

( )  
Taishan City Kam Kiu Aluminium Extrusion Co.,Ltd.

Add: Dajiang County, Taishan City, Guangdong,China

Post: 529261

Tel: +86 (750) 543 8596

Fax: +86(750) 543 8173





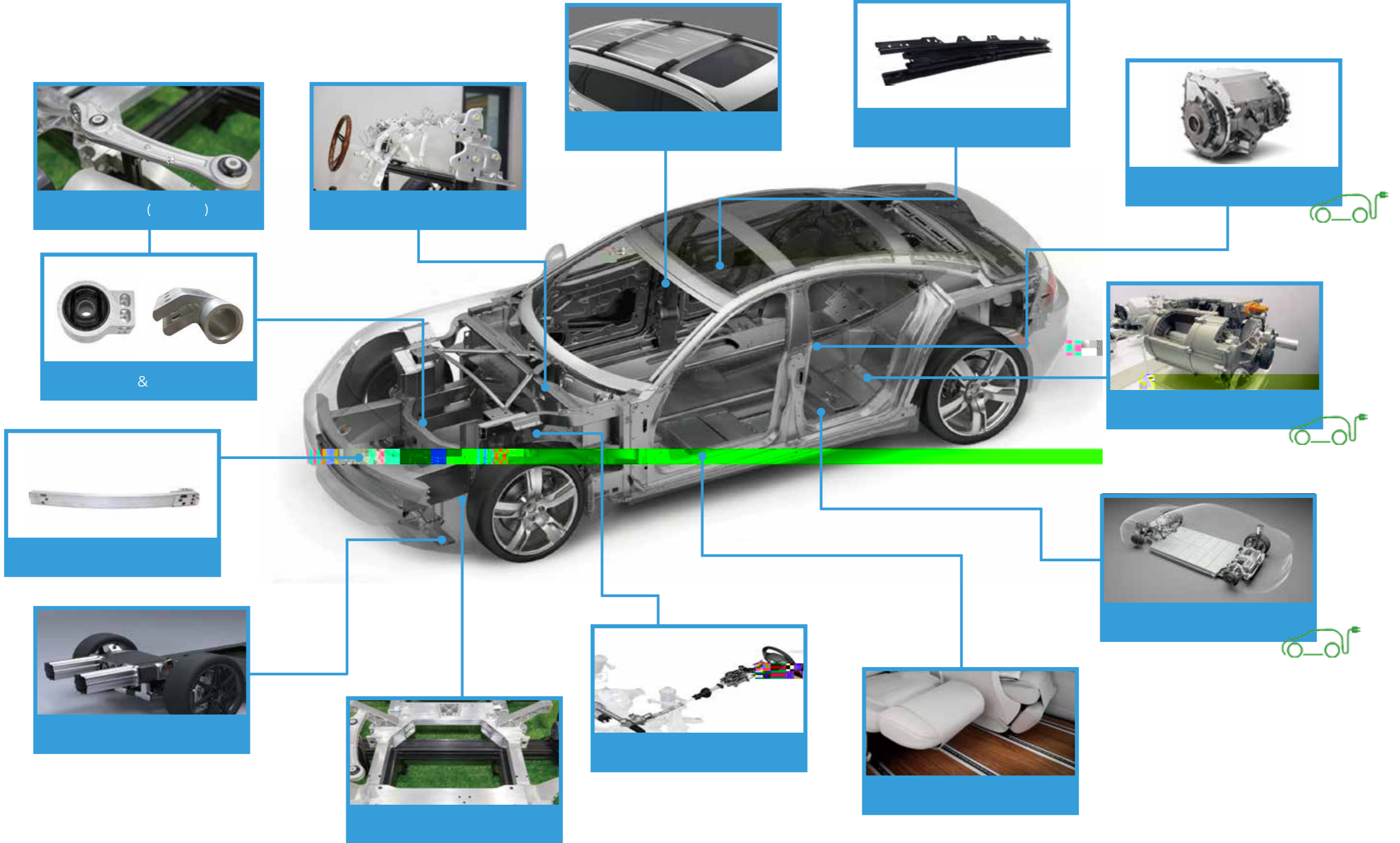
ISO9001:2015

IATF16949:2016

ISO14001:2015  
GB/T24001:2016

OHSAS18001:2007

( )



CNC 가

3 ~5 CNC가  
가



가

가  
가



가

3 / , 5  
1 5000 /



가



가 11,000



PMT

ThermoFisher  
SCIENTIFIC



가



: 0-50KN, 0-200KN, 0-100KN



가

Romdot



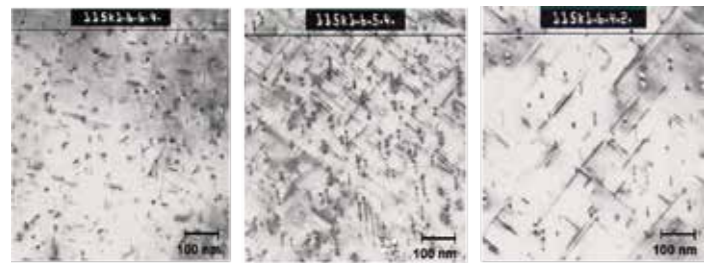
CMM3

HEXAGON  
METROLOGY

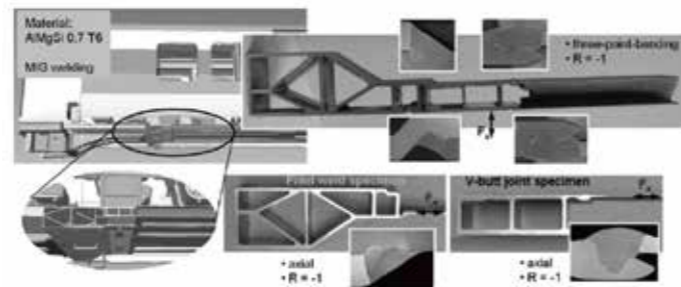
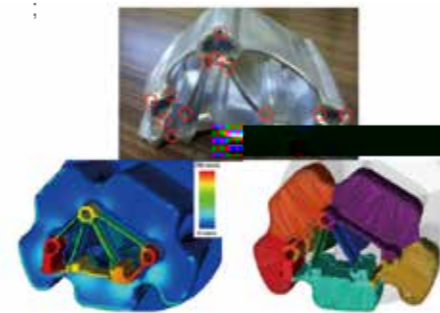




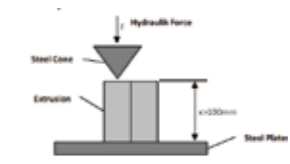
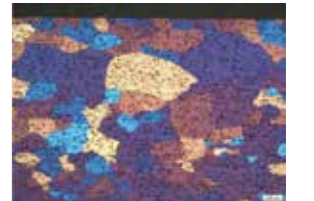
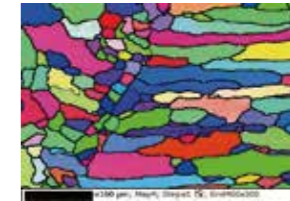
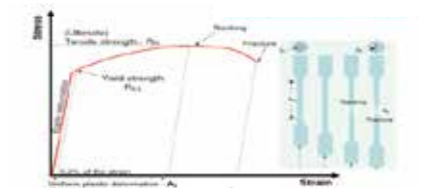
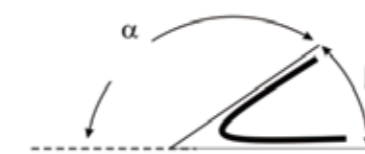
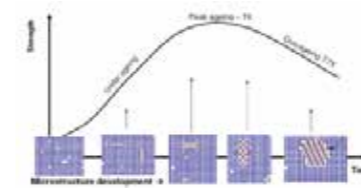
- 가 (MIG\FSW)



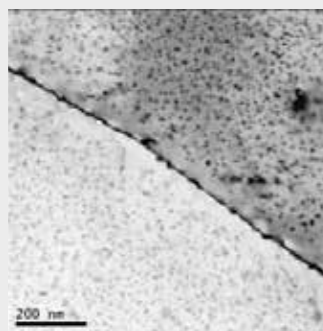
100 nm



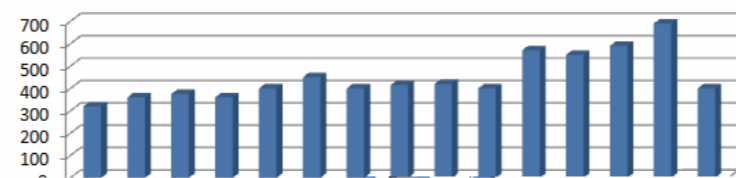
SCC IGC



GB/T 31467	GB/T 31467	X	
	GB/T 31467	X	
Z.B.	GB/T 31467	X	(X)
		(X)	X



200 nm



30 km/h,



200kn





2016

<IATF16949

>

가

가

SAP

가

